

ST. PAUL'S UNITED CHURCH OF CHRIST

5 West Arch Street, Fleetwood, Pennsylvania 19522 610-944-0406

Email: churchoffice@stpaulsfleetwood.org

Website: www.stpaulsfleetwood.org

Rev. Patrick W. Morris	Senior Pastor	610-370-7226 (Home) 610-207-7361 (Cell)
Rev. John Folk	Associate Pastor	484-926-2546 (Home) 610-468-8200 (Cell)
Jill Haley	Music Ministry Coordinator	jilhaley@ptd.net
Greta Ertel	Organist	ertelb@msn.com

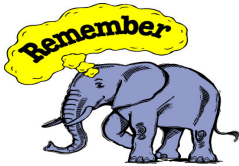
ANNOUNCEMENTS AND CONCERNS OF THE CHURCH

Sunday, November 5– Saturday, November 11, 2017

Hospitalized: *If you or someone you know is hospitalized or ill, please call the church office at 610-944-0406. If you do not want the name listed in the bulletin, please notify the church office as well. Thank you for your help.*

On-going Prayer Needs: Ross McKenty, Fern Shankweiler, Steven Sutherland, Elizabeth Ressler, Jane Folk, Bruce Schutt, Roger and Lilli Simon, Dennis Raudenbush, Brian Arndt, Mike Berg, June Wanner, Karen Shollenberger, Richard Knoll

Fern Shankweiler...Please sign the “Thinking of You” card in the Narthex. It will be mailed tomorrow.



Nov 6	Candy Makers	8am
	Prayer Shawl	7pm
Nov 7	Youth Hoagie pick up	
	Think Tank	7pm
Nov 11	Bazaar	9am-1pm



Shopping Cart in Narthex

It's that time of year, when we need to start preparing for the holiday dinner season. We need canned fruits and vegetables. Thank you for your continued donations for our families each month.



Painting Party

The Hospitality Committee is having a **Painting Party on Tuesday, November 28th from 6:30 – 8:30 p.m.** We will be painting Christmas trees and presents. The cost is \$15 per person. Join us for an evening of fellowship and fun!! Call Marie Richdale at 610-659-4740 for more information and to register.

BE THE CHURCH

Protect the environment.
Care for the poor.
Forgive often.
Reject racism.
Fight for the powerless.
Share earthly and spiritual resources.
Embrace diversity.
Love God.
Enjoy this life.

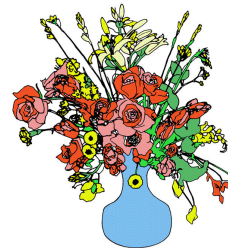
Tues. November 7, 2017 at 7pm **BE THE CHURCH**
Think Tank / Mission Work Session “Analyzing Our Strengths and Weaknesses” Come join us as we use our **hands** to prepare some of our “Care for the Poor” church mission projects & our **minds** to think about our faith community’s strengths and weaknesses in relation to the BE THE CHURCH values.



The Youth will be selling fresh wreaths for the Christmas holiday. They will be taking orders at the Bazaar and at both services on Nov. 12th and Nov. 19th. There will be two delivery dates November 26th and December 5th. Wreaths will be \$25 and swags will be \$15 with a choice of red or burgundy bows.



Don't be alone on Thanksgiving. Join us for a FREE dinner on Thanksgiving Day, NOVEMBER 23. Dinner will be served at 12 noon in the social room. We will be serving turkey, ham and all the trimmings. Transportation and take out dinners are available. Please call 610-944-8994 with questions and reservations.



A TIME OF GRATITUDE

On Sunday, December 3 there will be a luncheon to honor the service of Linda Speece as our church secretary. Linda will be retiring at the end of the year. There will be a luncheon in her honor following the 10:25 service. We are collecting contributions for both the luncheon and a farewell gift to Linda. If you plan to attend the luncheon please contact **Sandi Stern** (email: sls228@ptd.net phone: 610-944-9143) or **Barb Hoffman** (email bobbilee53@yahoo.com phone 484-955-2679). Please RSVP by **November 19.**

LET YOUR LIGHT SHINE



Luminaria

Luminaries will surround the church property again on Christmas Eve. A donation of \$1 will sponsor a candle in Memory or Honor of a loved one, or for your own enjoyment. You will find envelopes in the pews to place this tear-off in, mark it luminaries and then place it in the offering basket. Names will be taken **until December 10th**. A list will be in the bulletin on **December 31st**.

\$1 donation per candle: # _____ \$ _____

In Memory of _____

In Honor of _____

For your own enjoyment _____



Poinsettias for Christmas Eve

There are two ways to contribute to the Poinsettia display which will adorn our altar on Christmas Eve. You can give a \$1 donation to contribute toward plants which will be given to the elderly and shut-ins **or** you can give \$6.50 per plant, which allows you to keep the plant you buy. In either case, your donation can be in Memory of, in Honor of a loved one, or simply for your

own enjoyment. You will find envelopes in the pews to place this tear-off in, mark Poinsettias and then place it in the offering basket. Names will be taken until **December 10th**. A list containing sponsors will be available December 31st in the bulletin.

\$1 donation: # _____ \$6.50 Purchase _____ Red _____ White _____

In Memory of: _____

In Honor of: _____

For your own enjoyment _____



The Guild Christmas Tea

Tuesday, Dec. 5th at 7 p.m.

Church Social Hall

Entertainment by several groups from Fleetwood High School led by Charles Ebersole.

And

The Paul Moll Trio

Please sign-up on the poster in the narthex, starting early November. Specify how many will be in your group. Every effort will be made to keep those people together at a table. Otherwise, there will be a place at a table for everyone. We appreciate a dozen Christmas cookies per attendee (regular, sugar-free, or gluten free, the later two labeled as such). Please give them to any committee member upon your arrival. Cookies will be assorted onto serving plates for each table. If life is hectic, come without cookies. Your presence is more important than your cookies. We are about fellowship, music, laughter, and hearing the familiar Christmas Story that we love so much. Leftovers will be distributed to local facilities same as prior year. Please make every effort to attend this year. We will be remembering the lives of fine women not among us this year.

Support St. Paul's Youth Ministry and get all of your Christmas Shopping done EARLY!

Purchase gift cards for family, friends, teachers and business associates from over 375 retailers such as American Eagle, iTunes, Game Stop, Toys R Us, Starbucks, Panera, Red Lobster, Staples, Lowes, Home Depot, Amazon, Best Buy, Barnes & Noble and Shutterfly. Cards from Weis, Giant, Walmart and Target cards can help with your Thanksgiving and Christmas meals and entertaining. The complete list of retailers can be found in the social room or at www.shopwithscrips.com. Each card has a rebate of 2% to 16% that comes back to the Youth Group. Cards can be ordered at any time and there will be some on hand. Contact Kim Levan 610-823-7677, klevan@comcast.net or John Folk for more information or to place an order. This will be an ongoing fundraiser.



Youth Group



Shoebbox Gifts

Shoebbox Gifts: As we see so many disasters unfold before us, we wonder how can we add a ray of sunshine, a glimmer of hope to the lives of so many who have been impacted in the US and around the world? We can add a bit of joy to the lives of many children who will face a bleak holiday by sending a shoebox filled with a few gifts to lift them up when they really don't understand what has happened to them. When their lives are filled with so many "what ifs."

"What if," as we have for several years, we collect shoebox gifts to send to children from ages 2 to 14? "What if," through these boxes, children can put a piece of their uprooted lives back together again?

From October 22 to November 12, we will be sharing information and collecting shoeboxes. As we have in the past, we can assemble a shoebox for boys ages 10 to 14 which will include: a soccer ball, an air pump, a T-shirt and a toothbrush for \$15. Or, if you prefer, we will fill one for a girl or boy of a different age with appropriate gifts for \$15. Or you may wish to have your family shop and fill a box for a child. Questions? See Jim or Leona Wright. You may contact us at leonaandjim@juno.com or call us at 610.562.7492. We'd like to thank you for your past support and your support for this year.



Christmas Shut-In Cards

It's again time (Christmas) to remember our shut-ins with a Christmas card. A bag for each shut-in will be placed in the Narthex. We are asking our membership to sign their name on a Christmas card for each person (or as many as you wish) and drop them in the bags. There will be about 35 shut-ins. The bags will be in Narthex from Sunday, November 19th to Sunday, December 3th. Lets help to show our shut-ins that they are not forgotten and help to put a smile on their faces. Watch your church bulletin for the exact number of shut-ins. This is a Women's Guild project.

Advent Bible Study



ADVENT BIBLE STUDY So many times when we consider the Christmas story Joseph gets lost among the shepherds, the manger, and the angels. Adam Hamilton has a new Advent Bible study recently released entitled *Joseph; The Journey to Forgiveness*. The study will begin Wednesday, November 15 and conclude Wednesday, December 15. The Bible Study Group meet in the Lounge at 10:00 AM. Books may be picked up in the office next Sunday, November 12. (If you are interested in a Tuesday night Bible Study on the same topic, please see Pastor Pat.)



CHRISTMAS BAZAAR

Our 39th Christmas Bazaar! Saturday, Nov. 11th from 9-1
The Christmas Bazaar is the biggest fundraiser of the year for The Women's Guild. Please help to make it our most profitable one ever! When you read the list below, we are hopeful that you will find something that is a match for you. Here's what we need:

Baked good donations of especially cookies or most anything festive like pumpkin bread. (Kitty Yenser 610-944-7300)

Bazaar refreshments . (Barb Hoffman 484-955-2679) needs designated ingredients to prepare bazaar day menu.

See Barb at the Guild Table in the Narthex after either church service to sign up for grocery item(s) and/or to help.

Drop-off any perishable items the Friday before the Bazaar, please. Cookies will be bagged and weighed for pricing.

***Donations of toys, games, toy room furnishings, and baby equipment and accessories.** (Heidi Valick 610-944-1830)

***White Elephant items** (which amounts to most any yard sale type items). Call if unsure. (Carrie Wentz 610-926-3662)

NO ELECTRONIC ITEMS OR BABY FURNITURE

***Books, CD's and DVD's,** (NO ENCYCLOPEDIAS & VHS TAPES). (Janet Stein 610-334-1992 or Donna Wanner 610-944-7796)

***Secret Santa Room Items** - (Lois Stilwell 610-955-5007) Items for this room are now being purchased from GIFTS & SUCH.

Blood Drive Sandy Dugan 610-944-0290 to schedule a donation appointment between 8:00 & 12:00 or register online at www.giveapint.org using code 3302
 Crafters & Vendors are welcome- (Sandi Stern 610-944-9143)

Drop-off days for the * above are M-W during the week of Nov. 5th Sunday Nov.5, after church Day hours are 9a.m. - 1 p.m. / Evening hours are 4:00 p.m. - 7:00 p.m. Call Carrie Wentz for donation pick-up assistance or if you can volunteer for coverage on either drop-off shift.

Please DO NOT drop off ELECTRONIC ITEMS, BABY ITEMS or VHS TAPES
 Duties are simple: attending to the door during church school, assisting folks carry in their items, sorting donations.

Strong men and women needed on Thursday, 11/9 starting at 3:30 p.m. to move tables to their Bazaar day locations along with all the accumulated donations collected in the social hall. **Also, much help is needed for clean-up after the Bazaar on Saturday, Nov. 11th, starting at 12:45 p.m.** Unsold donated items get packed and loaded on a local charity truck and classrooms get put back to their normal for Sunday School the next day and church school on Monday.